



# EPSE LABORATORY

## Center of the EPSE™ Method expertise

EPSE's Laboratory Team specialists analyze water samples and **customer-specifically optimize the EPSE™ Method** to ensure most efficient treatment. Standardized working methods ensure efficient, safe and rapid sample handling. In addition to customer projects, EPSE laboratory conducts our **research and product development**.

### Lab PoC - Customized treatment recipe:

- Customized treatment recipe
- Initial OpEx budget
- Water analysis results before and after EPSE treatment
- Proposal for next steps

### How to get started:

- 1. Case background:** Filled out Customer Card and EPSE expert Desktop Assessment to specify customer's goals
- 2. Water sample:** 5 liters of water sample collected and sent to EPSE Laboratory
- 3. EPSE Lab PoC:** creating and optimizing a customized EPSE™ Method treatment recipe



\*All material is provided in English.



#### COMPANY INFO

EPSE Oy (Ltd.)  
www.epse.fi/en  
Company ID: 2477319-8

#### ADDRESS

PL 37 / Elopellontie 1 G  
33470 Ylöjärvi,  
Finland

#### CONTACT

Salla Heinonen, Laboratory manager  
salla.heinonen@epse.fi  
+358 50 575 4546



# EPSE LABORATORY

## Guaranteed Quality

EPSE Laboratory has the capacity to **perform high-quality metal analyses** of water samples and a **two-step solubility test** for solid samples according to EN-12457-3. We can also perform analyses of solid samples according to other standards if required.

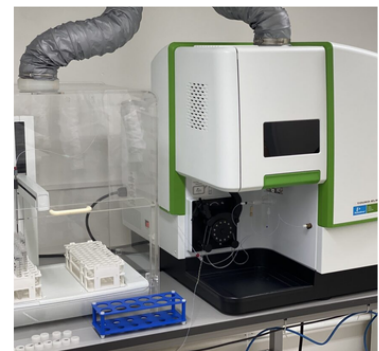
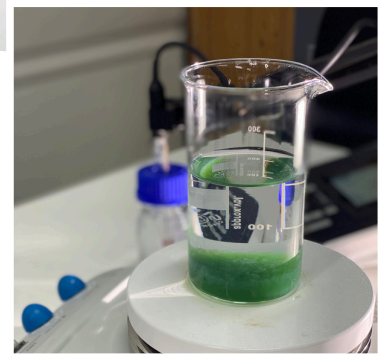
### Quality in laboratory

To ensure **reliable results** EPSE Laboratory participates regularly Profest SYKE accredited proficiency test and interlaboratory comparison organized by Finnish Environment Institute SYKE.

Participation in interlaboratory comparisons provides external quality assessment of the routine analyses and the laboratories can compare their results with those from other participants.

### Internal EPSE Laboratory quality control includes:

- Qualified laboratory staff
- Standardized work routines
- Regular maintenance of laboratory instruments and equipment
- Following all health and safety procedures proposed by the internal and external risk analysis



#### COMPANY INFO

EPSE Oy (Ltd.)  
www.epse.fi/en  
Company ID: 2477319-8

#### ADDRESS

PL 37 / Elopellontie 1 G  
33470 Ylöjärvi,  
Finland

#### CONTACT

Salla Heinonen, Laboratory manager  
salla.heinonen@epse.fi  
+358 50 575 4546